



SMART GUARD ZERO AIR LOSS CONDENSATE DRAIN



New and Improved Design!

The SMART GUARD is a compact electronically operated level sensed condensate drain which offers zero air-loss during the condensate discharge cycle.

The SMART GUARD is cost effective and offers a rapid pay-back period due to a competitive pricing level, low stocking cost, zero air-loss and energy saving aspects.

The SMART GUARD can be installed in all compressed air system components up to 3000 scfm regardless size and climate zone, Only 1 model needed!

The new and improved design, the robust industrial housing, the alarm feature and the 2/2 way direct acting valve assembly make the SMART GUARD a reliable solution for all compressed air system applications.

The SMART GUARD offers an integrated mesh strainer (to prevent large particles from entering the valve orifice), is easy to disassemble and is service friendly.

Commercial Benefits

- » Competitive compact zero air-loss draining solution.
- » Capacitive level sensing technology saves air, energy and money.
- » Rapid pay-back period due to competitive pricing level and reduced stocking costs.
- » 1 model covers up to 3000 scfm compressor capacity.
- » No sizing charts required.
- » Special module colour available for private label branding purposes.
- » Operating pressure up to 230 psi.

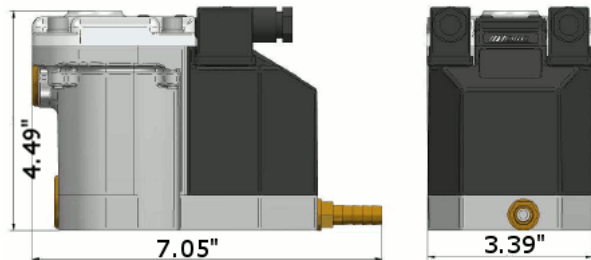
Technical Advantages

- » Alarm function (NO or NC) as a standard.
- » Successful draining of condensate due to large orifice (also heavily emulsified condensate).
- » Easy installation.
- » Visual display of operating status.
- » Integrated strainer.
- » Direct acting valve assembly, ensuring reliable discharge operation.
- » Robust aluminum housing.



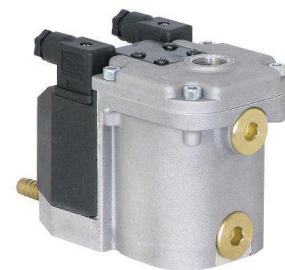
SMART GUARD ZERO AIR LOSS CONDENSATE DRAIN

Dimensions



Specifications

Maximum compressor capacity	3000 scfm
Min./max. system pressure	0 psi / 230 psi
Valve type	2/2 way direct acting
Valve orifice	4.5 mm
Valve seals	FPM
Inlet connection	1/2" NPT
Outlet connection	1/4" NPT
Inlet height	4.49" (top) and .59" & 2.95" (side)
Minimum medium temperature	34° F
Maximum medium temperature	122° F
Supply voltage options	230VAC / 115VAC 24VAC / 24VDC
Connectors	DIN 43650-B
Serviceable valve	Yes
TEST feature	Yes
Environmental protection	IP65 (NEMA4)
Integrated mesh strainer	Yes
Alarm contact options	Alarm Normally Closed (NC) / Alarm Normally Open (NO)



Multiple (3) Inlet Options



Integrated Mesh Strainer, to protect the valve

3 Step Disassembly for Drain Servicing



1. Unscrew the 4 bolts



2. Remove the top part



3. Slide off the electronic module

